



Lambda 5 Polyclonal Antibody

Catalog No	YP-Ab-14085
Isotype	IgG
Reactivity	Human;Rat;Mouse;
Applications	WB;IHC;IF;ELISA
Gene Name	IGLL1
Protein Name	Immunoglobulin lambda-like polypeptide 1
Immunogen	The antiserum was produced against synthesized peptide derived from the C-terminal region of human IGLL1. AA range:151-200
Specificity	Lambda 5 Polyclonal Antibody detects endogenous levels of Lambda 5 protein.
Formulation	Liquid in PBS containing 50% glycerol, 0.5% BSA and 0.02% sodium azide.
Source	Polyclonal, Rabbit,IgG
Purification	The antibody was affinity-purified from rabbit antiserum by affinity-chromatography using epitope-specific immunogen.
Dilution	WB: 1/500 - 1/2000. IHC-p: 1:100-1:300. ELISA: 1/10000.. IF 1:50-200
Concentration	1 mg/ml
Purity	≥90%
Storage Stability	-20°C/1 year
Synonyms	IGLL1; IGL1; Immunoglobulin lambda-like polypeptide 1; CD179 antigen-like family member B; Ig lambda-5; Immunoglobulin omega polypeptide; Immunoglobulin-related protein 14.1; CD179b
Observed Band	23kD
Cell Pathway	Endoplasmic reticulum . Secreted . In pre-B cells, localizes predominantly to the endoplasmic reticulum. .
Tissue Specificity	Expressed only in pre-B-cells and a special B-cell line (which is surface Ig negative).
Function	disease:Defects in IGLL1 are a cause of autosomal recessive non-Bruton type agammaglobulinemia [MIM:601495]. It is characterized by agammaglobulinemia and markedly reduced numbers of B cells.,online information:IGLL1 mutation db,similarity:Contains 1 Ig-like C1-type (immunoglobulin-like) domain.,subunit:Associates non-covalently with VPRED1.,tissue specificity:Expressed only in pre-B-cells and a special B-cell line (which is surface Ig negative).,
Background	immunoglobulin lambda like polypeptide 1(IGLL1) Homo sapiens The preB cell receptor is found on the surface of proB and preB cells, where it is involved in transduction of signals for cellular proliferation, differentiation from the proB cell to the preB cell stage, allelic exclusion at the Ig heavy chain gene locus, and promotion of Ig light chain gene rearrangements. The preB cell receptor is



composed of a membrane-bound Ig mu heavy chain in association with a heterodimeric surrogate light chain. This gene encodes one of the surrogate light chain subunits and is a member of the immunoglobulin gene superfamily. This gene does not undergo rearrangement. Mutations in this gene can result in B cell deficiency and agammaglobulinemia, an autosomal recessive disease in which few or no gamma globulins or antibodies are made. Two transcript variants encoding different isoforms have been found for this gene. [provided by RefSeq, Jul 2008],

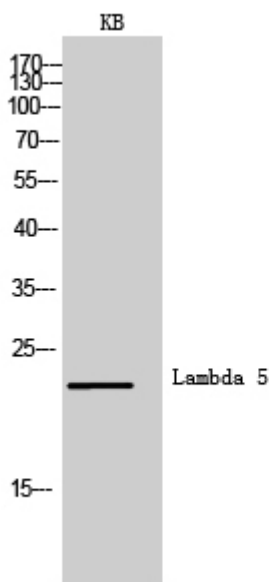
matters needing attention

Avoid repeated freezing and thawing!

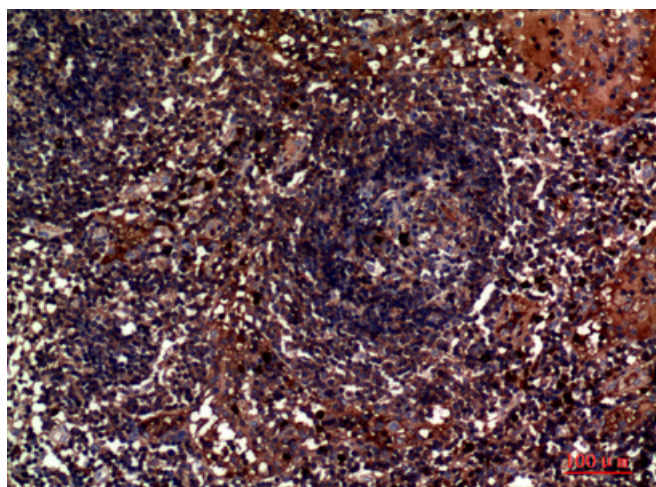
Usage suggestions

This product can be used in immunological reaction related experiments. For more information, please consult technical personnel.

Products Images



Western Blot analysis of KB cells using Lambda 5 Polyclonal Antibody. Secondary antibody(catalog#:RS0002) was diluted at 1:20000



Immunohistochemical analysis of paraffin-embedded human-lymph, antibody was diluted at 1:100